

**PROES S.R.L.**

**PRO ENGINEERING SOLUTIONS**



METTIAMO A VOSTRA DISPOSIZIONE  
COMPETENZE SPECIFICHE E  
STRUMENTI SOFTWARE ADEGUATI PER  
GESTIRE INTERAMENTE OGNI TIPO DI  
PROGETTO, ASSICURANDO ALTISSIMA  
QUALITÀ ED  
EFFICIENZA DELL'IMPIANTO

**ENGINEERING  
&  
CONSULTING**

---

**CHEMICAL  
&  
PETROLCHEMICAL**

---

**OIL & GAS**

---

**POWER GENERATION**

---

**ENERGY**



## AVEVA S.A.EVERYTHING 3D / PDMS

- Catalogue and Database Administration & 3D Modelling
- Draw & Draw Administrator
- Isodraft & Isodraft Administrator

## AUTODESK PLANT 3D

- Catalogue and Database Administration & 3D Modelling
- Draw Administrator
- Isometric Administrator

## ESAPRO - ESAIN

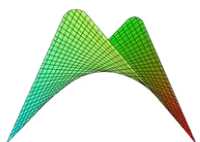
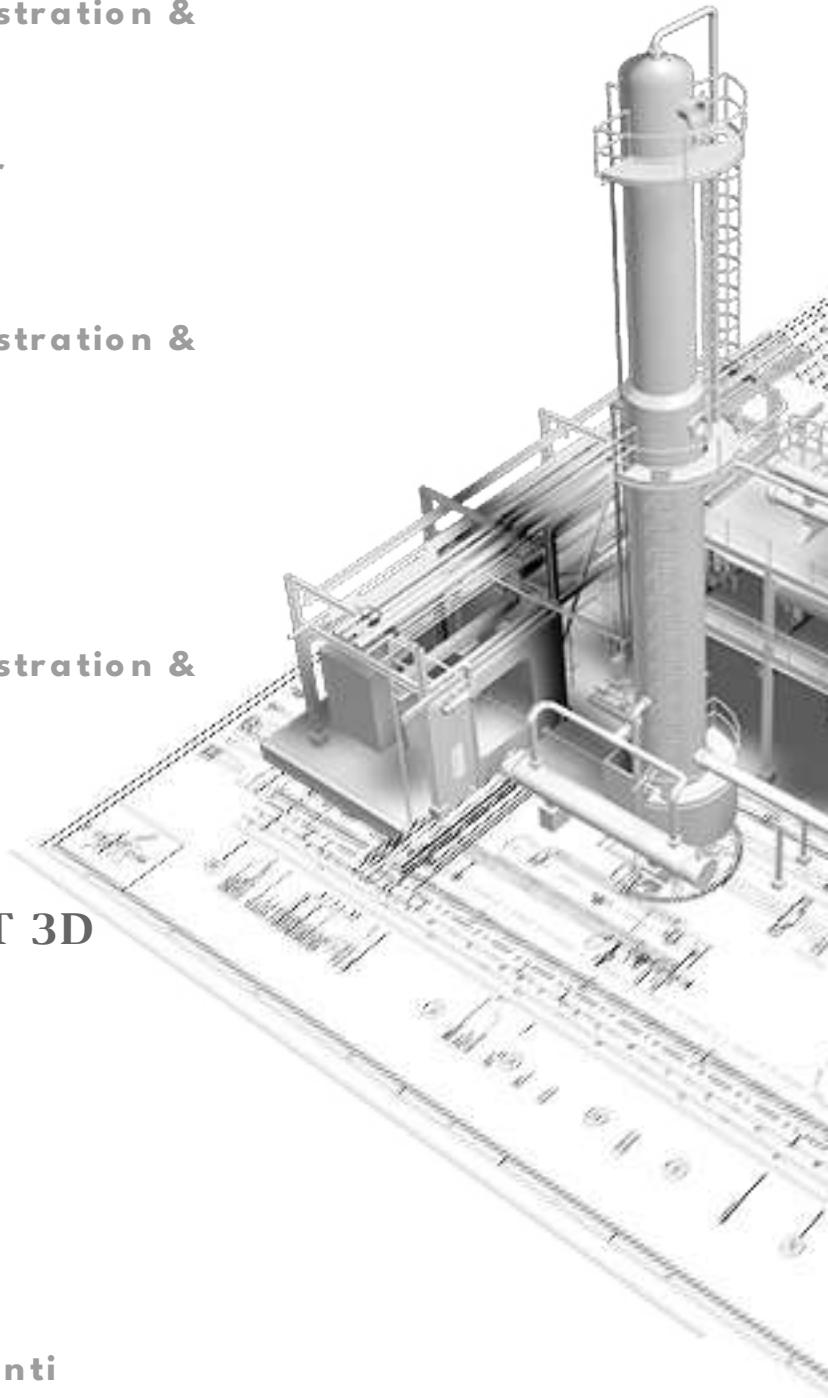
- Catalogue and Database Administration & 3D Modelling
- Draw Administrator
- Isometric Administrator

## INTERGRAPH SMART PLANT 3D

- 3D Modelling

## HEXAGON PPM CAESAR II

- Analisi delle sollecitazioni
- Analisi degli spostamenti
- Analisi delle deformazioni
- Analisi delle forze
- Verifica tenuta degli accoppiamenti flangiati



**PROES S.R.L.**

PRO ENGINEERING SOLUTIONS



+39 3934419600



Piazza della rinascita n. 74/A (PE)



info@proes.it

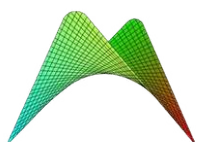
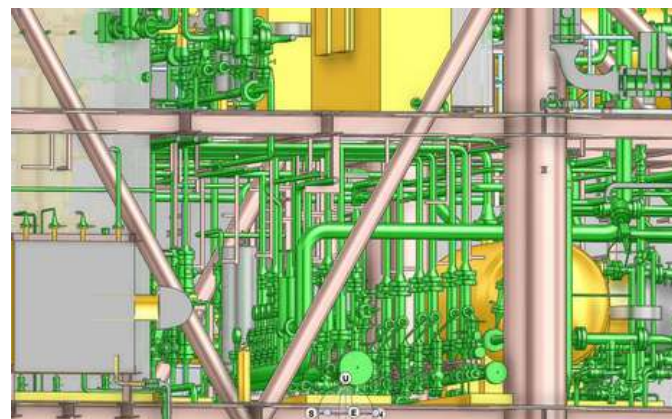
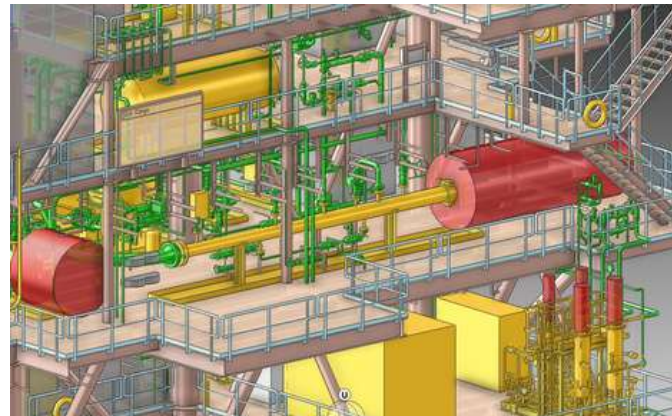
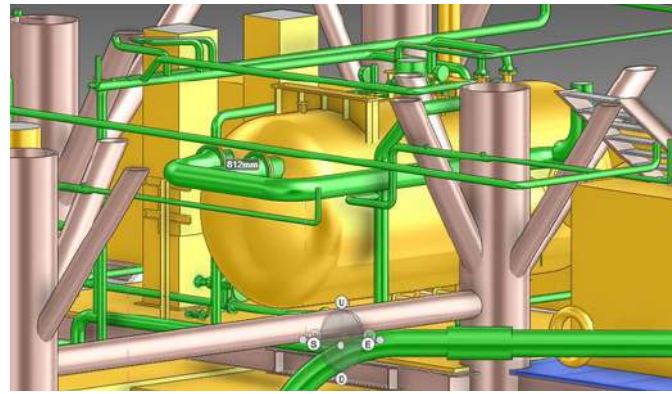


02168990683



# PIPING & LAYOUT

- **Ispezioni e Rilievi in Sito (Tradizionali e con Laser Scanner)**
- Site survey (traditional and laser scanner)
- Site survey (traditional and laser scanner)
- **Commenti ai P&ID's**
- P&ID Comments
- **Elenco linee**
- Lines List
- **Planimetrie posizionamento apparecchiature**
- Equipment layout
- **Studio del Piping**
- Piping Study
- **Sviluppo 2D e del Modello 3D del piping**
- 2D and 3D Modelling Pipe routing design
- **Model Review**
- Model Review
- **Definizione Supporti (standard e speciali)**
- Pipe supports (standard and specialtie)
- **Analisi delle sollecitazioni (Stress Analysis)**
- Stress Analysis Calculation
- **Disegni isometrici (sketch)**
- Isometric Drawings (Sketch)
- **MTO (Material Take Off)**
- MTO (Material Take Off)



**PROES S.R.L.**

PRO ENGINEERING SOLUTIONS



+39 3934419600



Piazza della rinascita n. 74/A (PE)



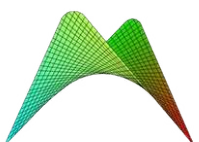
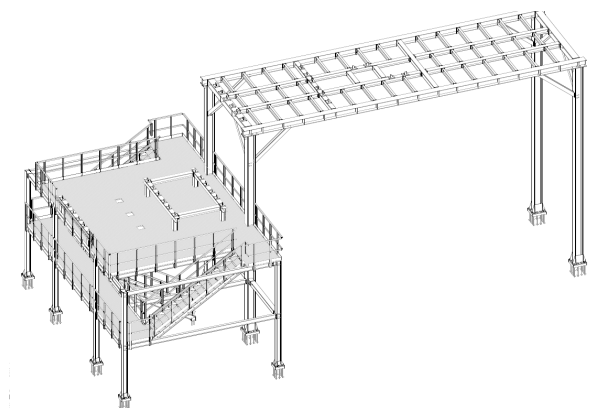
info@proes.it



02168990683

# CIVIL & STRUCTURAL

- **Ispezioni e Rilievi in Sito (Tradizionali o con Laser-Scanner)**
- **Site Survey (traditional and laser scanner)**
- **Progettazione fondazioni**
- **Foundation Design**
- **Progettazione strutture in cemento armato e metalliche**
- **Civil and Steel Structure Design**
- **Progettazione strutture metalliche modularizzate**
- **Modular Steelwork design**
- **Analisi di trasporto e sollevamento**
- **Transport & Lifting Analysis**
- **Analisi a fatica**
- **Fatigue Analysis**
- **Analisi dinamiche**
- **Dynamic Analysis**
- **Disegni Costruttivi**
- **Detail Drawing**
- **Conoscenza Regolamenti e Standard Internazionali**
- **International Rules and Standard knowledge**
- **MTO (Material Take Off)**
- **MTO (Material Take Off)**



**PROES S.R.L.**

**PRO ENGINEERING SOLUTIONS**



**+39 3934419600**



**Piazza della rinascita n. 74/A (PE)**



**info@proes.it**

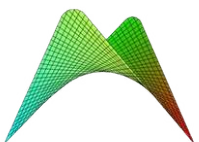
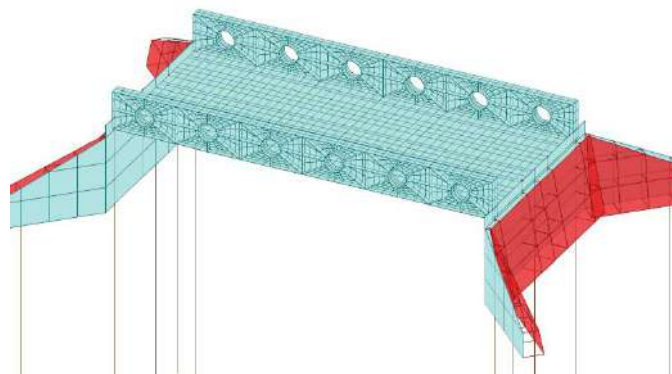
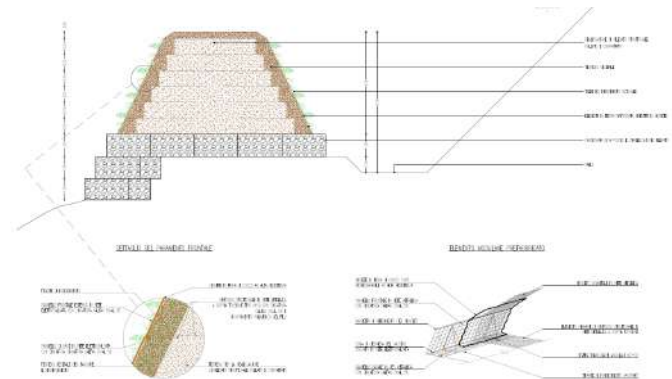
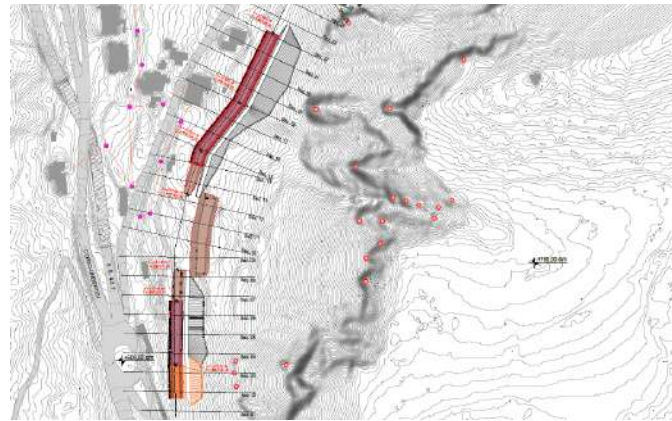
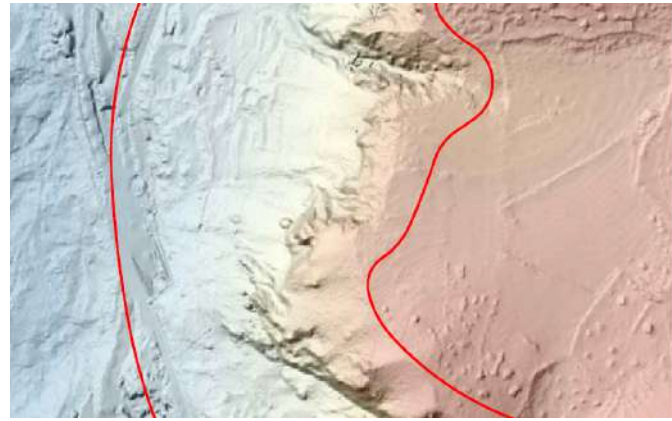


**02168990683**



# CIVIL & STRUCTURAL

- **Acquisizione dati topografici mediante LIDAR aviotrasportato**
- Airborne LIDAR topographic data acquisition
- **Consolidamenti palificate, terre armate, gabbionate**
- Piles, reinforced soil and gabion walls consolidations
- **Direzione dei lavori**
- Works Management
- **Collaudi**
- Trials
- **Coordinazione della Sicurezza in fase di Progettazione (CSP)**
- Design phase Safety Coordination
- **Coordinazione della Sicurezza in fase di Esecuzione (CSE)**
- Execution phase Safety Coordination



**PROES S.R.L.**

PRO ENGINEERING SOLUTIONS



+39 3934419600



Piazza della rinascita n. 74/A (PE)



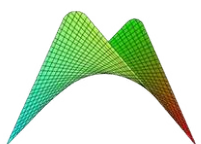
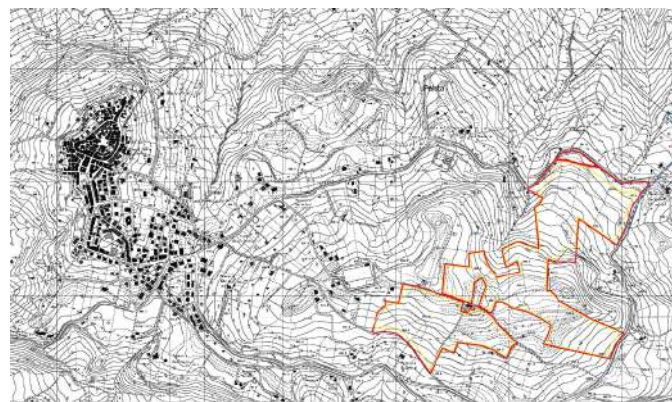
info@proes.it



02168990683

# PERMITTING AMBIENTALE

- **Studio dell'impatto ambientale (SIA)**
  - Environmental Impact Assessment
- **Relazione Paesaggistica**
  - Landscape report
- **Valutazione d'incidenza ambientale (VINCA)**
  - Appropriate Assessment
- **Verifica Preventiva dell'interesse archeologico (VPIA)**
  - Prior verification of archaeological interest
- **Relazione Agronomica**
  - Agronomic report
- **Piano Preliminare di utilizzo terre e rocce da scavo (TRS)**
  - Preliminary plan for the use of excavated soil and rocks
- **Relazione Geologica**
  - Geological report
- **Nullaosta Vincolo Idrogeologico (R.D. 3267/1923)**
  - Hydrogeological Constraint Clearance
- **Compatibilità Idraulica e Idrogeologica**
  - Hydraulic and Hydrogeological Compatibility



**PROES S.R.L.**

PRO ENGINEERING SOLUTIONS



+39 3934419600



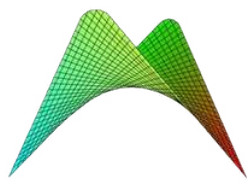
Piazza della rinascita n. 74/A (PE)



info@proes.it

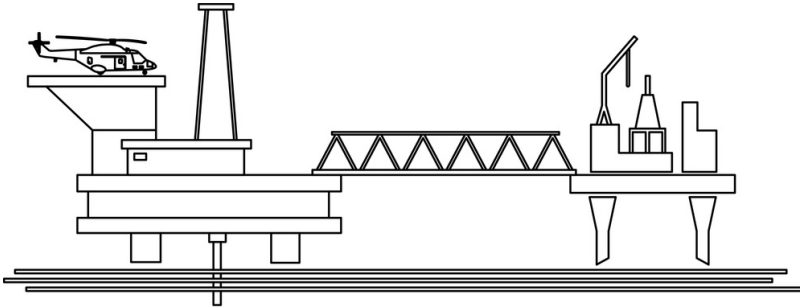


02168990683



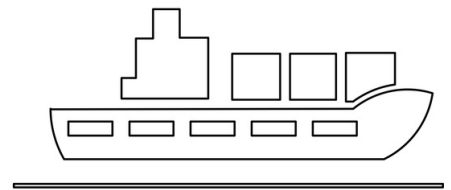
**PROES S.R.L.**

**PRO ENGINEERING SOLUTIONS**



**DOWNSTREAM**

**MIDSTREAM**



**UPSTREAM**

**Support for  
Oil & Gas, Petrochemical,  
Energy and Power  
Generation Industry**

**More information.**

**info@proes.it**

**Tel. +39 3934419600**